

**RACCORDS INOX PN20**

ISO 9001:2008

**BUREAU VERITAS**  
Certification



**Dimensions :** DN 1/8" au DN 4"  
**Raccordement :** Mâle, femelle ou à souder  
**Température Mini :** - 25°C  
**Température Maxi :** + 180°C  
**Pression Maxi :** 20 Bars  
**Caractéristiques :** Fabrication par procédé de "cire perdue"  
Filetage et taraudage BSP

**Matière :** Acier inox

## RACCORDS INOX PN20

### CARACTERISTIQUES :

- Fabrication par procédé de "cire perdue"
- Filetage conique BSP
- Taraudage cylindrique BSP

### UTILISATION :

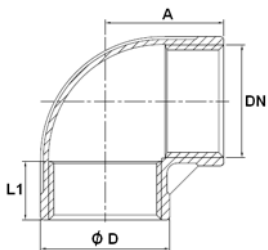
- Pour fluides courants compatibles
- Température mini admissible Ts : - 25°C
- Température maxi admissible Ts :+ 180°C
- Pression maxi admissible Ps : 20 bars

### GAMME :

- DN 1/8" au DN 4" suivant modèles
- Raccords en inox ASTM A351 CF8M sauf pour les modèles Ref.2034, 2038, 2039, 2040, 2041 et 2042 en inox ASTM A182 F316

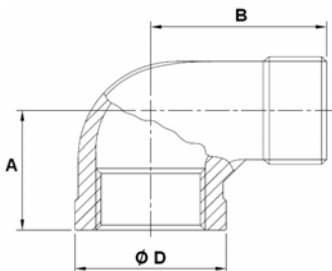
### DIMENSIONS ( en mm ) :

- **Coude 90° F. F. ( DN 1/8"– 4" ) Ref. 2001**



DN	1/8"	1/4"	3/8"	1/2"	3/4"	1"	1"1/4	1"1/2	2"	2"1/2	3"	4"
A	17	19	21.5	27	30	35	43	45	54	69	77	92.5
Ø D	13.9	17.4	20.9	24.9	31.2	38.1	47.4	54.1	66.6	82.4	95.9	121.8
L1	6.5	9.7	10.1	11	11.4	13.8	14.5	14.9	15.7	25.4	27	29.5
Poids (Kg)	0.018	0.029	0.043	0.053	0.079	0.131	0.204	0.263	0.433	0.757	1.083	1.724

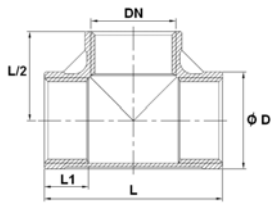
- **Coude 90° M. F. ( DN 1/8"– 3" ) Ref. 2010**



DN	1/8"	1/4"	3/8"	1/2"	3/4"	1"	1"1/4	1"1/2	2"	2"1/2	3"
A	19	21.5	24.5	29	33.5	37	43	47	57.5	66	74
B	26.5	30.8	36.5	41	48	55	62	67	77.5	93	107
Ø D	13.9	17.2	20.9	24.9	31.2	38.1	47.4	54.1	66.6	87.4	101.8
Poids (Kg)	0.015	0.028	0.043	0.054	0.084	0.139	0.189	0.277	0.412	0.913	1.65

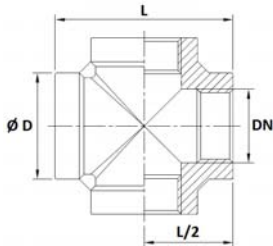
**RACCORDS INOX PN20**
**DIMENSIONS ( en mm ) :**

- **Té F. F. F. ( DN 1/8" – 4" ) Ref. 2003**



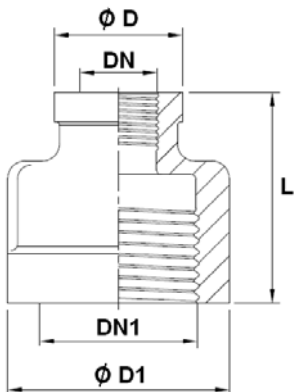
DN	1/8"	1/4"	3/8"	1/2"	3/4"	1"	1"1/4"	1"1/2"	2"	2"1/2"	3"	4"
Ø D	13.9	17.4	20.9	24.9	31.2	38.1	47.4	54.1	66.6	82.4	95.9	121.8
L	34	39	44	55	60	70	85	89	107	136	154	185
L1	6.5	9.7	10.1	11	11.4	13.8	14.5	14.9	15.7	25.4	27	29.5
Poids (Kg)	0.026	0.041	0.059	0.073	0.108	0.168	0.260	0.34	0.53	0.878	1.198	2.056

- **Croix F. F. F.F. ( DN 1/8" – 4" ) Ref. 2002**



DN	1/8"	1/4"	3/8"	1/2"	3/4"	1"	1"1/4"	1"1/2"	2"	2"1/2"	3"	4"
Ø D	14.8	18.5	22.1	28.8	33.7	42	50.4	57.1	69.2	89.2	99.5	126
L	34.1	38	44	55	63.4	73.2	85.6	89.8	108	137.2	143	180
L/2	17.05	19	22	27.5	31.7	36.6	42.8	44.9	54	86.6	71.5	90
Poids (Kg)	0.037	0.056	0.08	0.16	0.22	0.365	0.48	0.57	0.9	1.606	2	3.3

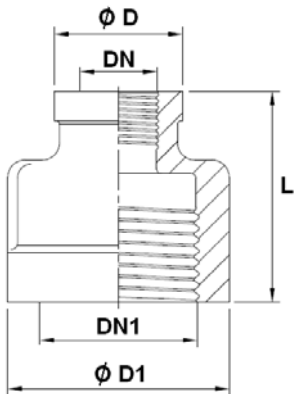
- **Réduction F. F. ( DN 1/8" – 2" ) Ref. 2013**



DN	1/8"	1/4"	3/8"	1/2"	3/4"	1"	1"1/4"	1"1/2"
DN1	1/4"	3/8"	1/2"	3/4"	1"	1"1/4"	1"1/2"	2"
Ø D	15.5	18.2	23	28	34	41.6	50	57
Ø D1	18	22	28.5	34	41.5	50	57	70
L	24	29	34.5	36.5	41.5	47	51.5	59
Poids (Kg)	0.020	0.030	0.066	0.082	0.115	0.186	0.24	0.387

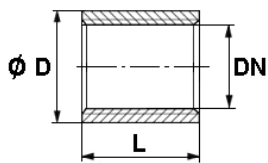
**RACCORDS INOX PN20**
**DIMENSIONS ( en mm ) :**

- Double réduction F. F. ( DN 1/8" – 2" ) Ref. 2014



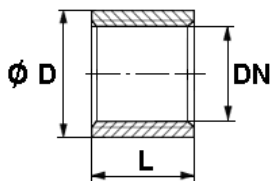
DN	1/8"	1/4"	3/8"	1/2"	3/4"	1"	1"1/4"
DN1	3/8"	1/2"	3/4"	1"	1"1/4"	1"1/2"	2"
Ø D	18.1	19.5	28.2	29	34	41.5	56.5
Ø D1	22	28.5	34	41.5	50	57	70
L	29	34	36.5	42	46	50	59
Poids (Kg)	0.035	0.06	0.092	0.121	0.175	0.235	0.447

- Manchon F. F. ( DN 1/8" – 4" ) Ref. 2015



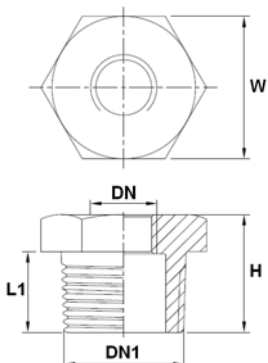
DN	1/8"	1/4"	3/8"	1/2"	3/4"	1"	1"1/4"	1"1/2"	2"	2"1/2"	3"	4"
Ø D	14	18.5	21.5	26.5	32	40	48	55	66	82	95	122
L	17	25	26.5	34	36	43	48	48	56	65	71	83
Poids (Kg)	0.013	0.031	0.034	0.068	0.084	0.141	0.195	0.235	0.302	0.510	0.670	1.200

- Demi manchon F. F. ( DN 1/8" – 2" ) Ref. 2017



DN	1/8"	1/4"	3/8"	1/2"	3/4"	1"	1"1/4"	1"1/2"	2"
Ø D	14	19	22	26	32	40	48	55	66
L	10	11	13	16	18	20	22	23	27
Poids (Kg)	0.008	0.014	0.018	0.029	0.038	0.052	0.086	0.095	0.161

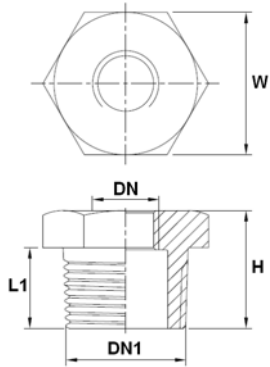
- Réduction M. F. ( DN 1/8" – 2" ) Ref. 2021



DN	1/8"	1/4"	3/8"	1/2"	3/4"	1"	1"1/4"	1"1/2"
DN1	1/4"	3/8"	1/2"	3/4"	1"	1"1/4"	1"1/2"	2"
H	15	16.5	20	21.5	24.5	27.5	28	31
L1	12.5	13	16	17	20	22	22	23.5
W	15	18	23	29	35	45	50	62
Poids (Kg)	0.012	0.015	0.028	0.038	0.069	0.107	0.132	0.23

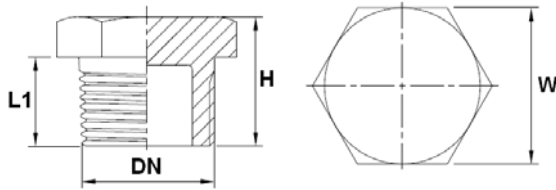
**RACCORDS INOX PN20**
**DIMENSIONS ( en mm ) :**

- Double réduction M. F. ( DN 1/8" – 2" ) Ref. 2024



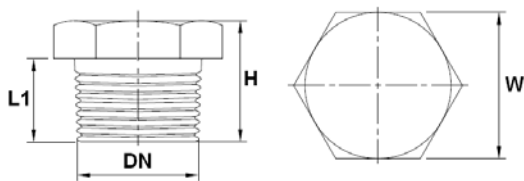
DN	1/8"	1/4"	3/8"	1/2"	3/4"	1"	1"1/4"
DN1	3/8"	1/2"	3/4"	1"	1"1/4"	1"1/2"	2"
H	16.5	20	21.5	24.5	27.5	28	31
L1	13	16	17	20	22	22	23.5
W	18	23	29	35	45	50	62
Poids (Kg)	0.022	0.029	0.052	0.08	0.134	0.157	0.278

- Bouchon mâle creux ( DN 1/2" – 2" ) Ref. 2022



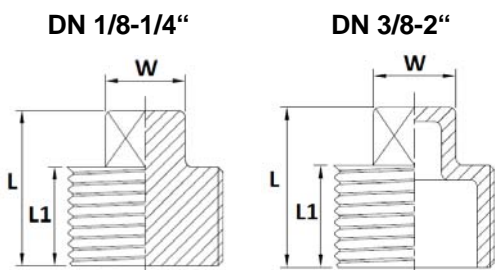
DN	1/2"	3/4"	1"	1"1/4"	1"1/2"	2"
H	22.6	23.3	26.8	30.5	30.8	34
L1	16	16.5	19	21	21	22.8
W	25.2	29.7	36.5	45.3	51.4	62.5
Poids (Kg)	0.040	0.056	0.087	0.141	0.190	0.280

- Bouchon mâle plein ( DN 1/8" – 2" ) Ref. 2023



DN	1/8"	1/4"	3/8"	1/2"	3/4"	1"	1"1/4"	1"1/2"	2"
H	19	19	19	22	26	28	33	35	39
L1	11	12	13	16	17	19	21	23	27
W	12	16	19	23	28	36	46	50	65
Poids (Kg)	0.013	0.024	0.036	0.061	0.115	0.198	0.384	0.509	0.913

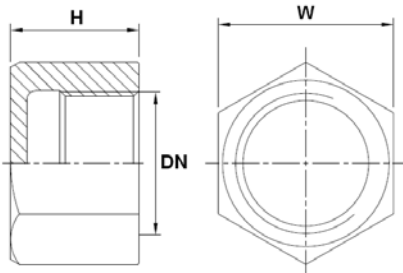
- Bouchon mâle tête carrée ( DN 1/8" – 2" ) Ref. 2020



DN	1/8"	1/4"	3/8"	1/2"	3/4"	1"	1"1/4"	1"1/2"	2"
L	18	20	20	25	26.5	33	35	35	40
L1	11	12	12	15	15.5	20	20	20	23
W	7.2	8	10	13	16	19	22	25	29
Poids (Kg)	0.009	0.015	0.017	0.03	0.044	0.075	0.115	0.14	0.215

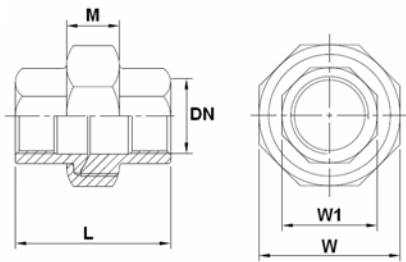
**RACCORDS INOX PN20**
**DIMENSIONS ( en mm ) :**

- Bouchon femelle hexagonal ( DN 1/4" – 2" ) Ref. 2037



DN	1/4"	3/8"	1/2"	3/4"	1"	1"1/4	1"1/2	2"
H	17	17.5	20	20.4	27.1	30	30.3	32.3
W	17.5	21.2	25.5	30.1	37.4	47	53.2	66
Poids (Kg)	0.022	0.031	0.042	0.051	0.095	0.153	0.188	0.304

- Raccord union F.F. ( DN 1/4" – 2" ) Ref. 2025 - Etanchéité conique

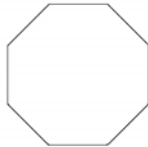


DN	1/4"	3/8"	1/2"	3/4"	1"	1"1/4	1"1/2	2"
L	34.5	37.6	38.6	44	51	58	59	61.5
M	12.2	15	15	15	17	20	20	20.8
W	28	34	39.2	46	55	63.5	71	85
W1	17.5	20.5	26.5	31.2	38	47.5	54	67
Poids (Kg)	0.069	0.098	0.149	0.191	0.299	0.386	0.482	0.716

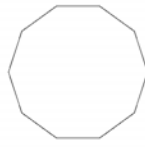
DN 1/4" :



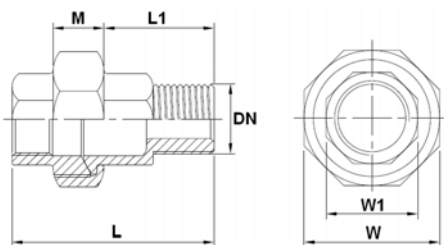
DN 3/8" - 1" :



DN 1"1/4 - 2" :



- Raccord union M.F. ( DN 1/4" – 2" ) Ref. 2026 - Etanchéité conique

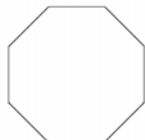


DN	1/4"	3/8"	1/2"	3/4"	1"	1"1/4	1"1/2	2"
L	46	48	52.8	58.6	66.5	73.5	74.5	80.5
L1	22.7	21.5	26	28.6	32.2	35	35	39
M	12.2	15	15	15	17	20	20	20.8
W	28	34	39.2	46	55	63.5	71	85
W1	17.2	20.3	26	30.6	38	47.3	53	66
Poids (Kg)	0.074	0.107	0.164	0.224	0.336	0.443	0.538	0.839

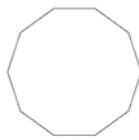
DN 1/4" :



DN 3/8" - 1" :

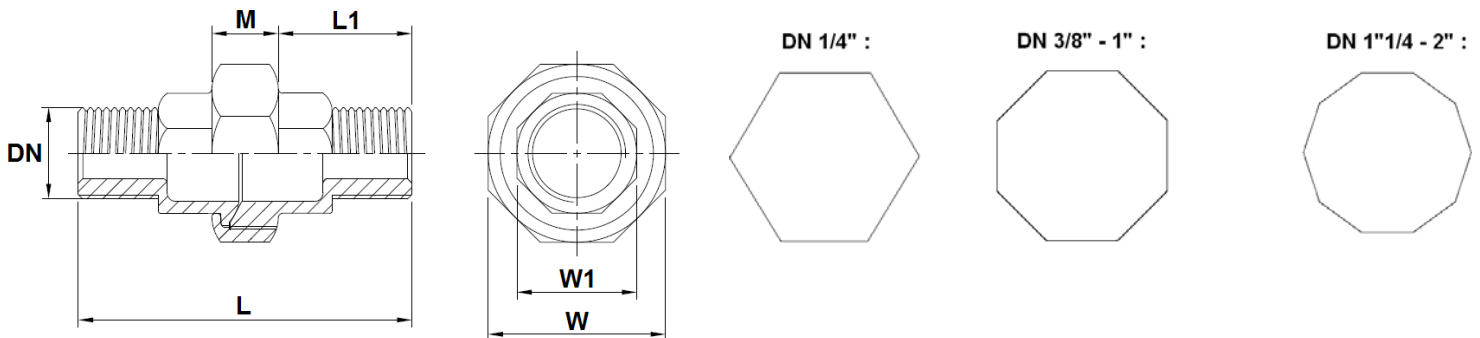


DN 1"1/4 - 2" :



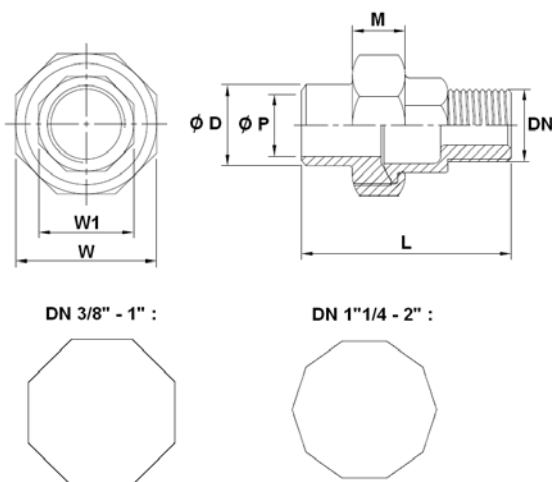
**RACCORDS INOX PN20**
**DIMENSIONS ( en mm ) :**

- Raccord union Mâle – Mâle ( DN 1/4" – 2" ) Ref. 2062 - Etanchéité conique



DN	1/4"	3/8"	1/2"	3/4"	1"	1"1/4	1"1/2	2"
L	56	57.5	66.5	73.4	81	89.5	89.3	99
L1	21	21	26.1	29.6	32	34.5	34	39
M	12.2	15	15	15	17	20	20	20.8
W	28	34	39.2	46	55	63.5	71	85
W1	17	20	26.5	31	38.4	47.3	53	66
Poids (Kg)	0.085	0.112	0.175	0.246	0.358	0.502	0.614	0.946

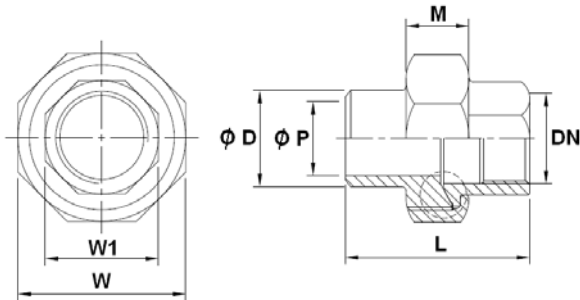
- Raccord union Mâle – A souder B.W. ( DN 1/4" – 2" ) Ref. 2027 - Etanchéité conique



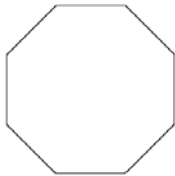
DN	1/4"	3/8"	1/2"	3/4"	1"	1"1/4	1"1/2	2"
Ø D	13.5	17.2	21.5	27	33.7	42.7	48.5	60.5
Ø P	9.4	12.6	16	21.5	27	35.6	41.5	52.7
L	46.4	47.7	53	60	66	72	73	77.6
M	12.2	15	15	15	17	20	20	20.8
W	28	34	39.2	46	55	63.5	71	85
W1	17.2	20.3	26	30.6	38	47.3	53	66
Poids (Kg)	0.069	0.104	0.153	0.225	0.328	0.432	0.535	0.765

**RACCORDS INOX PN20**
**DIMENSIONS ( en mm ) :**

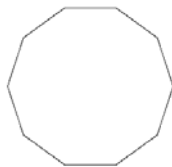
- Raccord union Femelle – A souder B.W. ( DN 1/4" – 2" ) Ref. 2028 - Etanchéité conique



DN 3/8" - 1" :

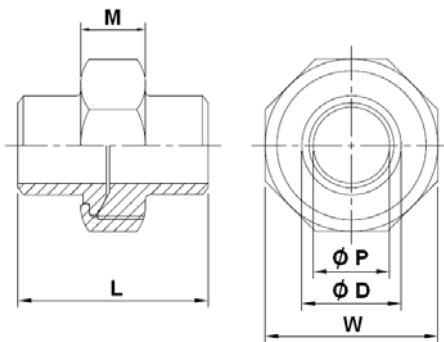


DN 1"1/4 - 2" :

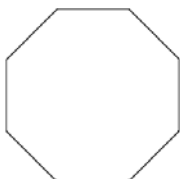


DN	1/4"	3/8"	1/2"	3/4"	1"	1"1/4	1"1/2	2"
Ø D	13.5	17.2	21.5	27	33.7	42.7	48.5	60.5
Ø P	9.4	12.6	16	21.5	27	35.6	41.5	52.7
L	35	38	40	45.7	50	56	57	58.6
M	12.2	15	15	15	17	20	20	20.8
W	28	34	39.2	46	55	63.5	71	85
W1	17.4	20.3	26.5	31	38	47.3	53.3	66.5
Poids (Kg)	0.065	0.113	0.145	0.185	0.290	0.395	0.465	0.675

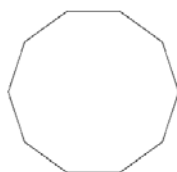
- Raccord union à souder B.W. – B.W. ( DN 8 – DN 50 ) Ref. 2029 - Etanchéité conique



DN 3/8" - 1" :



DN 1"1/4 - 2" :

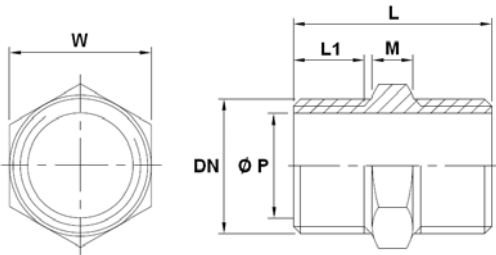


DN	8	10	15	20	25	32	40	50
Ø D	13.5	17.2	21.5	27	33.7	42.7	48.5	60.5
Ø P	9.4	12.6	16	21.5	27	35.6	41.5	52.7
L	34.5	38.5	40	47.5	49.6	54.8	55	57.4
M	12.2	15	15	15	17	20	20	20.8
W	28	34	39.2	46	55	63.5	71	85
Poids (Kg)	0.06	0.107	0.144	0.203	0.310	0.420	0.510	0.765



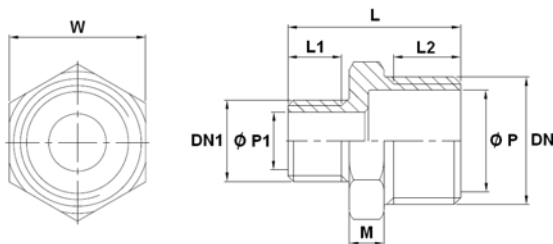
**RACCORDS INOX PN20**
**DIMENSIONS ( en mm ) :**

- Mamelon hexagonal ( DN 1/8" – 2" ) Ref. 2030



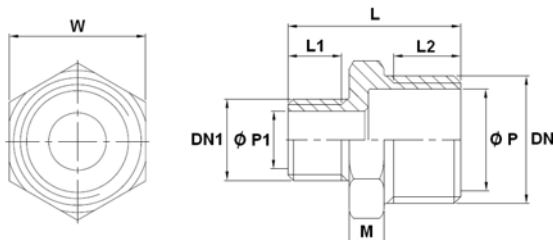
DN	1/8"	1/4"	3/8"	1/2"	3/4"	1"	1"1/4"	1"1/2"	2"
L	26	30	30	40	40.5	48	49.5	49.5	52.5
L1	9	11	11	14	14	17.5	18	18.5	20
M	5.6	6	6	7.6	8.5	8	9.5	9.5	10.5
Ø P	5.5	8.2	11.8	15.2	21	26.5	35	41	53
W	13	15	18	23	29	35	45	50	62
Poids (Kg)	0.012	0.019	0.023	0.046	0.062	0.104	0.152	0.169	0.231

- Réduction mâle - mâle ( DN 1/8" – 2" ) Ref. 2031



DN	1/4"	3/8"	1/2"	3/4"	1"	1"1/4"	1"1/2"	2"
DN1	1/8"	1/4"	3/8"	1/2"	3/4"	1"	1"1/4"	1"1/2"
L	29	32	36	39	45	50	50.5	52
L1	10	11	12	14	14	17.5	18	18.5
L2	11	12	14	14	17.5	18	18.5	20
M	6	7	7	7	9	10	10.5	11
Ø P	8.2	11.8	15.2	21	27	35	41	51.8
Ø P1	5.5	8.2	11.8	15.2	21	27	35	41
W	15	18	23	29	35	45	50	62
Poids (Kg)	0.016	0.025	0.041	0.057	0.088	0.151	0.184	0.267

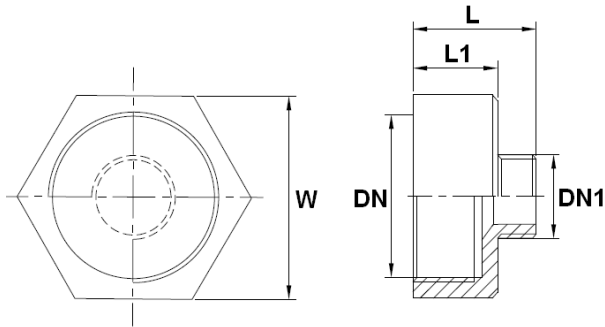
- Double réduction mâle - mâle ( DN 1/8" – 2" ) Ref. 2032



DN	3/8"	1/2"	3/4"	1"	1"1/4"	1"1/2"	2"
DN1	1/8"	1/4"	3/8"	1/2"	3/4"	1"	1"1/4"
L	31	35	36	45	46	50.5	52
L1	10	11	12	14	14	17.5	18
L2	12	14	14	17.5	18	18.5	20
M	7	7	7	9	10	10.5	11
Ø P	11.8	15.2	21	27	35	41	51.8
Ø P1	5.5	8.2	11.8	15.2	21	27	35
W	18	23	29	35	45	50	62
Poids (Kg)	0.022	0.039	0.051	0.093	0.143	0.187	0.281

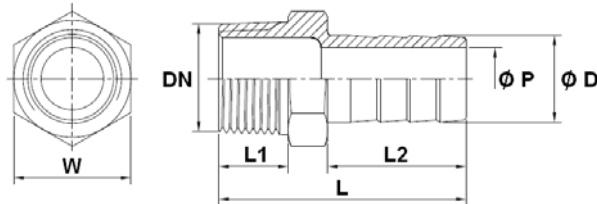
**RACCORDS INOX PN20**
**DIMENSIONS ( en mm ) :**

- Réduction femelle - mâle ( DN 1/8" – 2" ) Ref. 2033



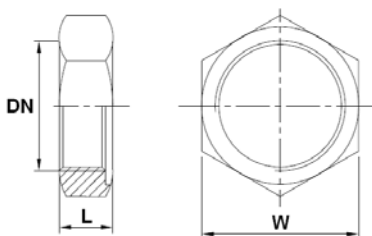
DN	1/4"	3/8"	1/2"	3/4"	1"	1"1/4	1"1/2	2"
DN1	1/8"	1/4"	3/8"	1/2"	3/4"	1"	1"1/4	1"1/2
L	27	31	35	38.5	44	47	50	53
L1	16.5	18.5	22	23	26	27	28	30
W	17	21	26	32	38	46	54	63
Poids (Kg)	0.024	0.039	0.068	0.104	0.127	0.170	0.265	0.290

- Embout tétine mâle ( DN 1/4" – 2" ) Ref. 2035



DN	1/4"	3/8"	1/2"	3/4"	1"	1"1/4	1"1/2	2"
L	43	49	56.5	60	69	70	80	88
L1	11.5	13	15	15.5	19	22	22	22.5
L2	25	29.5	33	34	39	37	47.5	53.5
Ø D	8	10	13	20	25	32	40	51.5
Ø P	4	5	7	15	19.5	26.5	33.5	44
W	15	19	23	28	37	45	50	62
Poids (Kg)	0.020	0.034	0.055	0.084	0.133	0.196	0.286	0.44

- Ecrou hexagonal ( DN 1/8" – 2" ) Ref. 2036

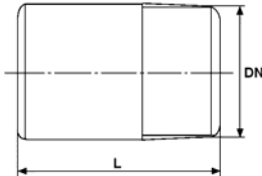


DN	1/8"	1/4"	3/8"	1/2"	3/4"	1"	1"1/4	1"1/2	2"
L	6.3	7	7.5	7.7	9.2	9	11.7	11.8	13.1
W	17.3	19.1	25.3	30.1	34.4	43.2	52	58.1	71.9
Poids (Kg)	0.008	0.009	0.018	0.024	0.032	0.048	0.086	0.097	0.155

## RACCORDS INOX PN20

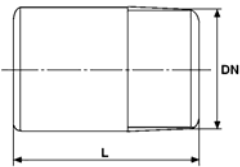
### DIMENSIONS ( en mm ) :

- Embout mâle à souder L=50 mm ( DN 1/4"– 2" ) Ref. 2034



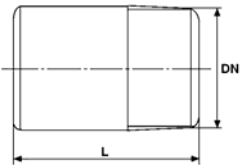
DN	1/4"	3/8"	1/2"	3/4"	1"	1"1/4"	1"1/2"	2"
L	50	50	50	50	50	50	50	50
Poids (Kg)	0.025	0.039	0.058	0.079	0.093	0.135	0.16	0.215

- Embout mâle à souder standard ( DN 1/4"– 4" ) Ref. 2039



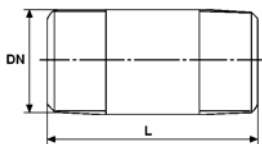
DN	1/4"	3/8"	1/2"	3/4"	1"	1"1/4"	1"1/2"	2"	2"1/2"	3"	4"
L	22	23	27	33	35	36	41	46	55	70	80
Poids (Kg)	0.010	0.013	0.025	0.037	0.061	0.074	0.106	0.160	0.256	0.461	0.745

- Embout mâle à souder L=100 mm ( DN 1/4"– 2" ) Ref. 2042



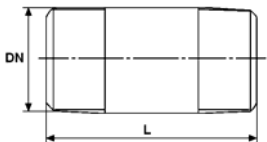
DN	1/4"	3/8"	1/2"	3/4"	1"	1"1/4"	1"1/2"	2"
L	100	100	100	100	100	100	100	100
Poids (Kg)	0.050	0.078	0.116	0.158	0.186	0.270	0.32	0.430

- Mamelon tube L=100 mm ( DN 1/4"– 2" ) Ref. 2038



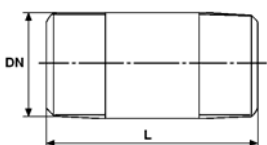
DN	1/4"	3/8"	1/2"	3/4"	1"	1"1/4"	1"1/2"	2"
L	100	100	100	100	100	100	100	100
Poids (Kg)	0.051	0.063	0.105	0.127	0.185	0.229	0.262	0.39

- Mamelon tube standard ( DN 1/4"– 4" ) Ref. 2040



DN	1/4"	3/8"	1/2"	3/4"	1"	1"1/4"	1"1/2"	2"	2"1/2"	3"	4"
L	40	40	60	60	60	80	80	100	100	120	120
Poids (Kg)	0.019	0.022	0.058	0.066	0.1	0.178	0.193	0.390	0.438	0.753	1.043

- Mamelon tube L=200 mm ( DN 1/4"– 2" ) Ref. 2041



DN	1/4"	3/8"	1/2"	3/4"	1"	1"1/4"	1"1/2"	2"
L	200	200	200	200	200	200	200	200
Poids (Kg)	0.102	0.126	0.210	0.254	0.370	0.458	0.524	0.780

## **RACCORDS INOX PN20**

### **NORMALISATIONS :**

- Fabrication suivant la norme ISO 9001 : 2008
- DIRECTIVE 97/23/CE : Produits exclus de la directive ( Article 1,§3.2 )
- Filetage mâle BSP conique suivant la norme ISO 7/1 R pour les embouts 2010, 2020, 2021, 2022, 2023, 2024, 2026, 2027, 2030, 2031, 2032, 2033, 2034, 2035, 2038, 2039, 2040, 2041, 2042 et 2062
- Taraudage cylindrique BSP suivant la norme ISO 228-1 pour les manchons 2015 et 2017
- Taraudage cylindrique BSP suivant la norme ISO 7/1 Rp pour les raccords 2001, 2002, 2003, 2010, 2013, 2014, 2021, 2024, 2025, 2026, 2028, 2033, 2036 et 2037

**PRECONISATIONS :** Les avis et conseils, les indications techniques, les propositions, que nous pouvons être amenés à donner ou à faire, n'impliquent de notre part aucune garantie. Il ne nous appartient pas d'apprécier les cahiers des charges ou descriptifs fournis. Il appartient au client de vérifier l'adéquation entre le choix du matériel et les conditions réelles d'utilisation.