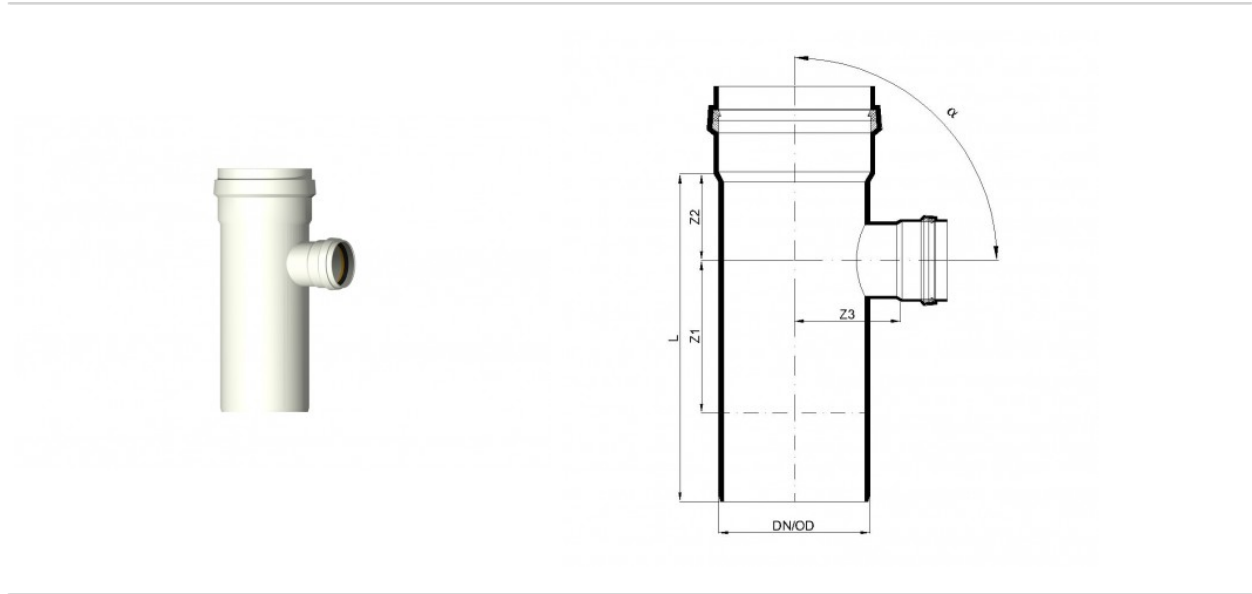
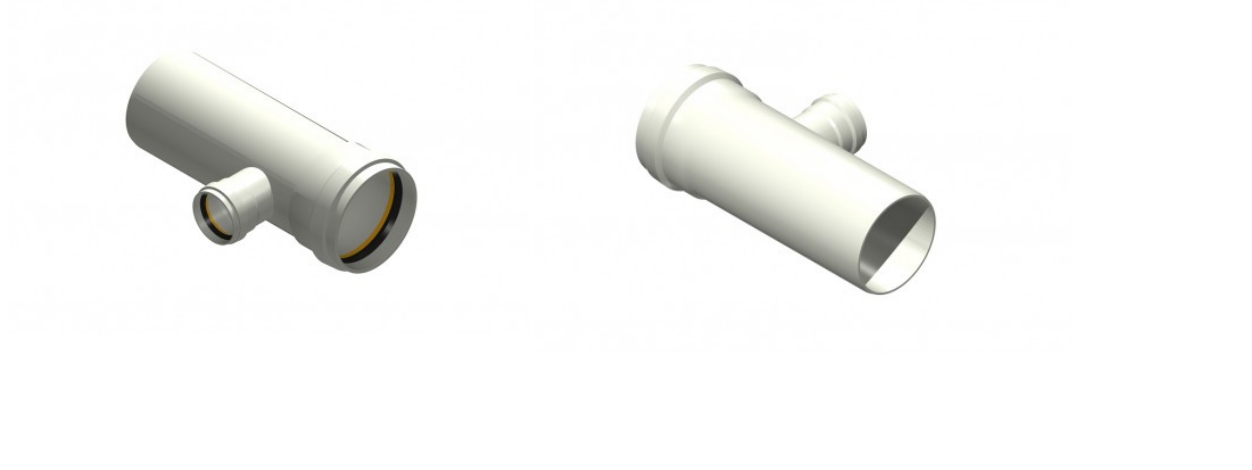


# PDF FICHE TECHNIQUE

## POLO-ECO plus PREMIUM – Branchement 315/160/90°

N° article 06467



## Fiche technique

DN/OD	315
DN/OD2	160
Angle $\alpha$	90°
Longueur L	680 mm
Z1	317 mm
Z2	180 mm
Z3	221 mm
Poids	11,10 kg/u.
Unité d'emballage	1 u.