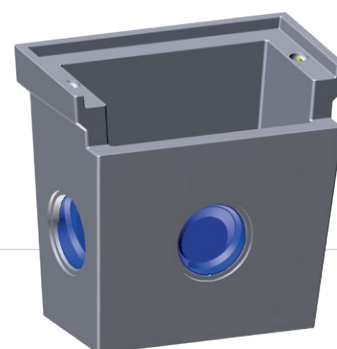
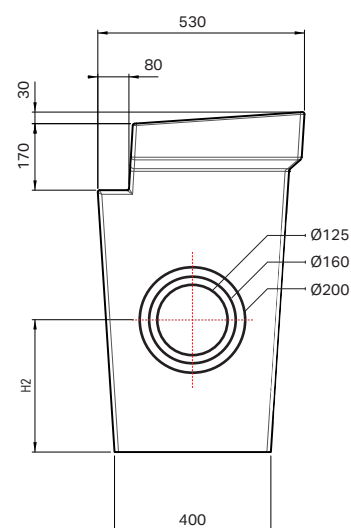
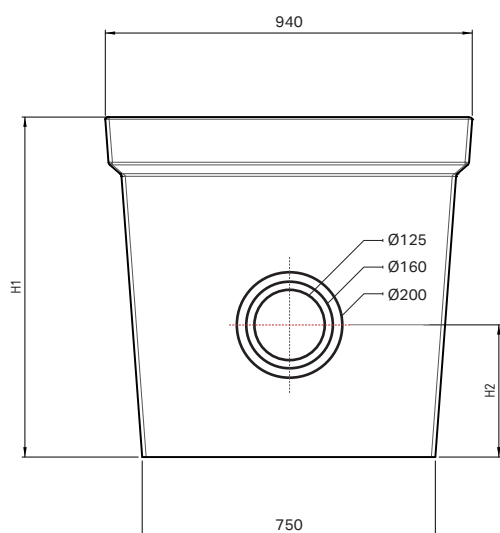


REGARD AVALOIR À GRILLE Avec opercules

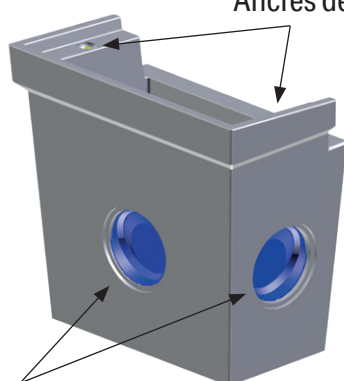


PRATIQUE

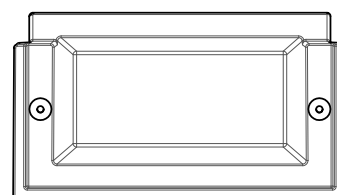
Manutention par 2 ancrs de levage 1,3 T.



Ancres de levage 1,3 T



3 diamètres de branchement :
125, 160 et 200 mm



CODE ARTICLE	Désignation	Ht Ext. (H1) mm	Ht Int. (mm)	H2 (mm)	Ø branchement (mm)	Poids (kg)
1004384	Regard Avaloir HT 87 cm	870	800	335	125 / 160 / 200	305
1004385	Regard Avaloir HT 112 cm	1120	1050	435	125 / 160 / 200	399
1004386	Regard Avaloir HT 148 cm	1480	1410	435	125 / 160 / 200	540