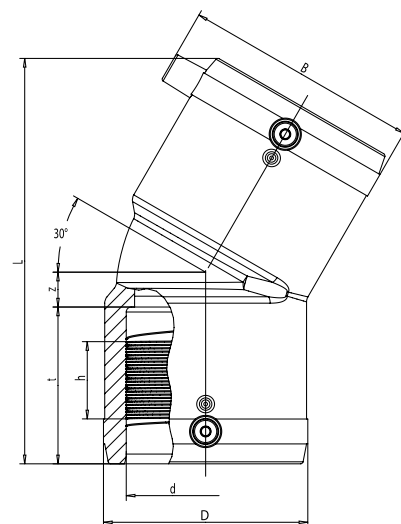


FRIALEN W30 COUDE ÉLECTROSOUDABLE À 30°

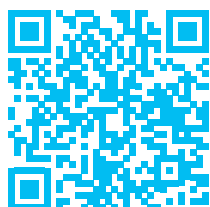
alixis

pression de service admissible : 16 bar (eau) / 10 bar (gaz).
Pour tubes SDR 11 à SDR 17,6.



| d | Code | D | L | t | z | h | B | Poids |
|-----|----------|-----|-----|-------|------|----|-----|-------|
| mm | | mm | mm | mm | mm | mm | mm | kg |
| 90 | 61527220 | 115 | 224 | 71,5 | 23,5 | 43 | 123 | 0,780 |
| 110 | 61527320 | 142 | 252 | 83,0 | 27,0 | 47 | 157 | 1,260 |
| 125 | 61527420 | 158 | 270 | 85,0 | 29,5 | 51 | 162 | 1,640 |
| 160 | 61534020 | 199 | 350 | 96,0 | 40,0 | 59 | 198 | 3,870 |
| 180 | 61626120 | 229 | 390 | 101,0 | 79,0 | 57 | 234 | 4,800 |
| 200 | 61626220 | 254 | 412 | 106,0 | 83,5 | 54 | 256 | 6,350 |
| 225 | 61626320 | 281 | 456 | 123,0 | 86,0 | 64 | 282 | 8,560 |

INSTRUCTIONS DE MONTAGE DISPONIBLES SUR NOTRE SITE



d < 250 mm

www.alixis.fr



d > 250 mm

