

### Product data

Article number	893593
Loading class	C 250
Standard	DIN EN 124-2
Material	EN-GJS
Weight	approx. 41,7 kg
Pieces per pallet	12 pcs.

### Detailed information

#### LOCKING SYSTEM

- innovative spring locking system
- hinders unauthorised opening = anti-theft
- relief from traffic due to location under the cover

#### FRAME

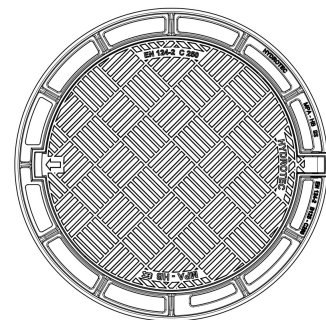
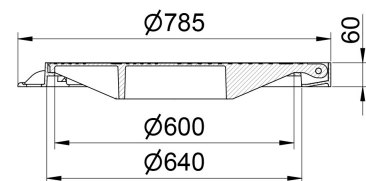
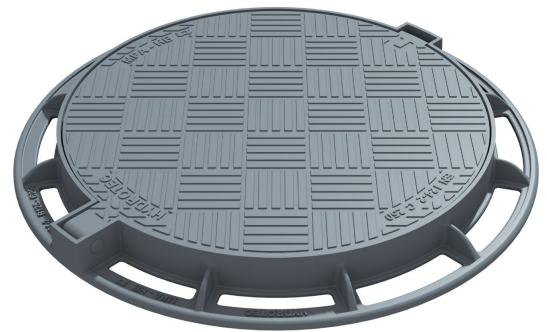
- holes for fixing with shaft

#### HINGE

- simple ergonomic opening of the cover
- 110° position of inspection
- anti-theft protection by means of solid stainless steel bolt between frame and cover

#### INSERT

- changeable HYDROpren-insert (U-shape)
- hinders vertical and horizontal contact to iron through U-shape, long life, high abrasion stability for extreme loads





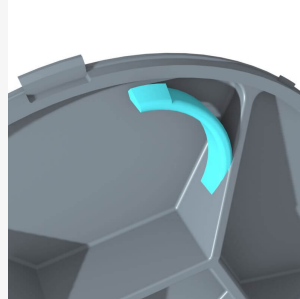
### PRODUCT DATA

#### DESIGN

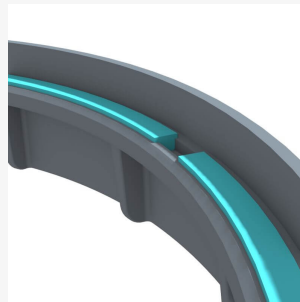
- criss-cross design with slide safety
- minimization of rolling noise in moving traffic

#### ACCESSORIES

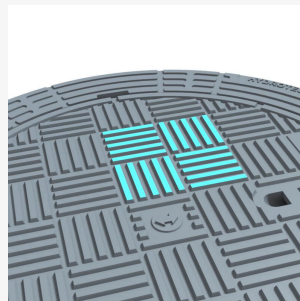
- Universal opening bar (989511)



Locking system



HYDROpren insert



Innovative design