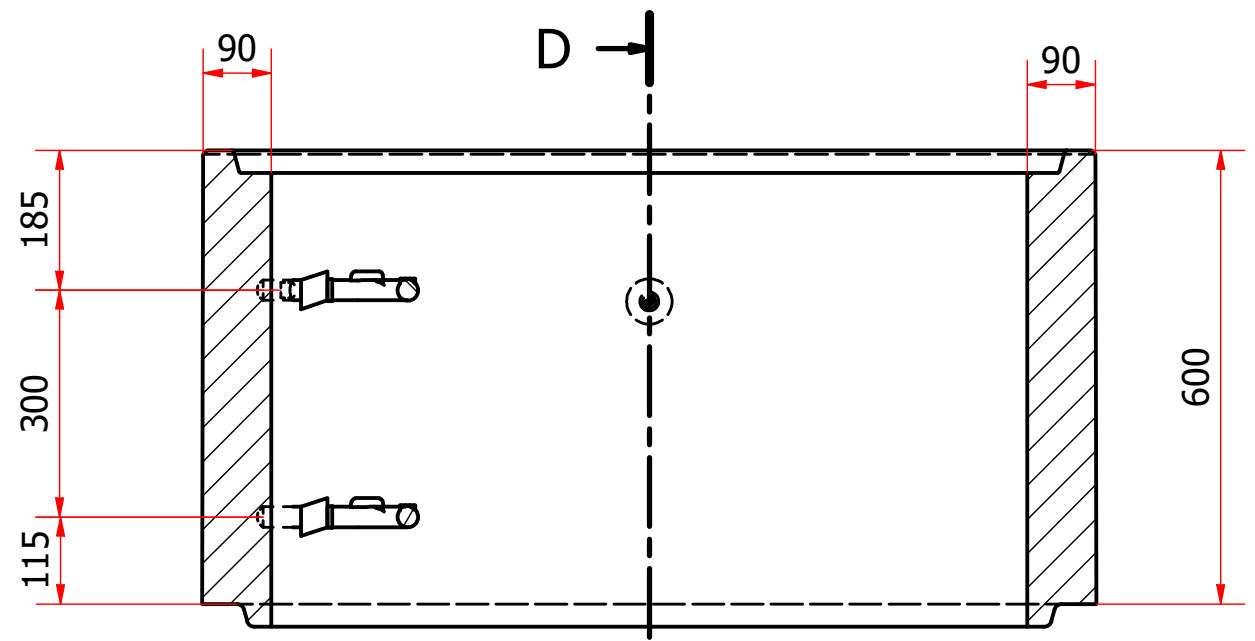
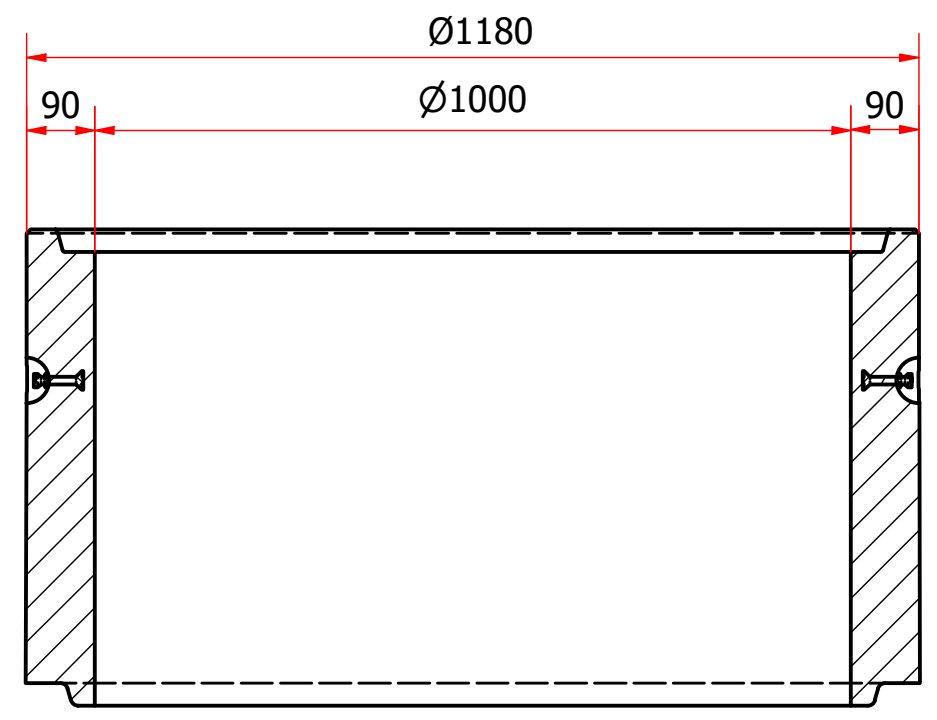


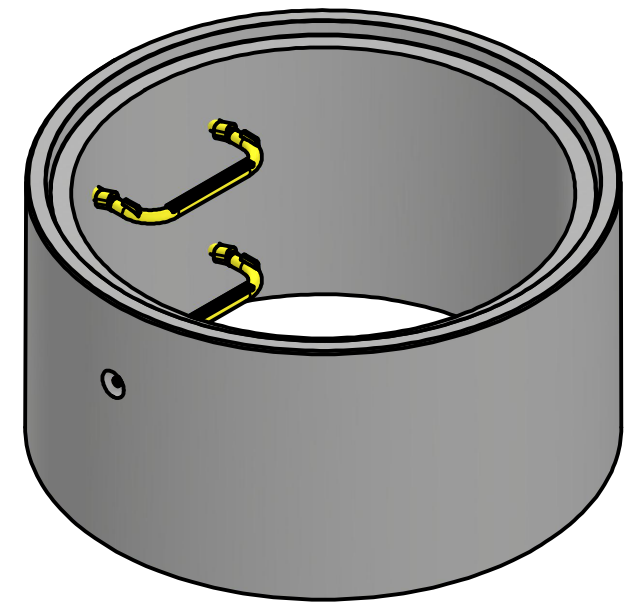
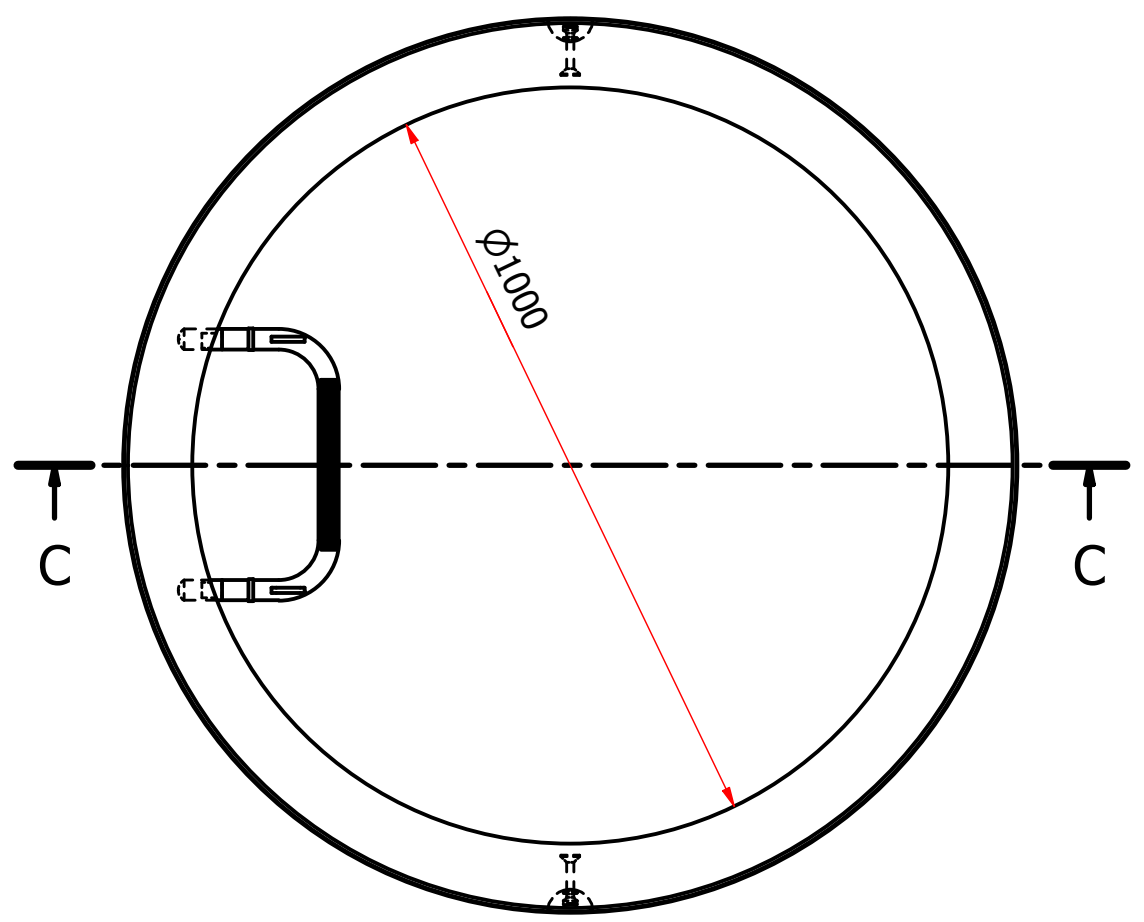
C-C (1/10)



D-D (1/10)



SENS DE POSE



Poids: 460 kg

Code: RON1060EP

ÉTANCHÉITÉ NON GARANTIE

Levage : 2 ANCRÉS de 1.3 t

Tolérance dimensionnelle: ± 15 mm

Produit livré sur palette.



AFFAIRE :
FICHE TECHNIQUE
 Dessiné par: R.DUVERNAY

RONDELLE EDI + 2 Echelons
 Diam. 1000 HT 600
 CHANTIER N°: DATE : 04/10/2022 Ech: 1

	MODIFICATIONS	DATE	PAGE
A			01
B			
C			
D			