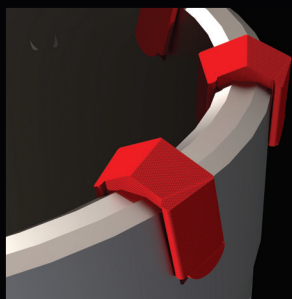


CRUSHER

CARBIDE CORE BITS

COMPATIBLE SDS-MAX

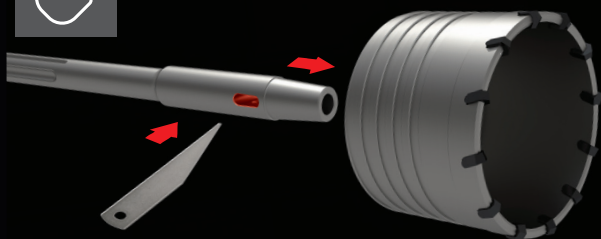
**SIMPLE USE
FOR INTENSIVE WORK!**



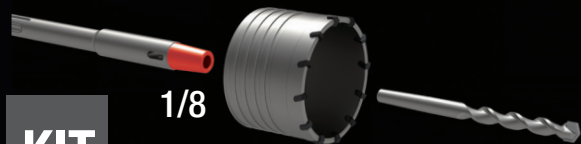
Thick carbide teeth brazed to copper for resistance up to 1200 degrees Celsius.



PRATICE



Easy to dismantle with extraction kit ref 303



KIT

1/8

Drill bits and accessories available separately or as a complete kit assembled and ready for use.



CARBIDE CORE BIT WITH 1/8" CONICAL ATTACHMENT FOR LARGE DIAMETER DRILLING

Carbide core bits made of high-strength steel with high-temperature copper brazed carbide teeth at high temperatures for fast drilling fast drilling and good wear resistance. Suitable for power drills over 950W.



DIAGER®
PROFESSIONAL TOOLS MANUFACTURER

RANGE

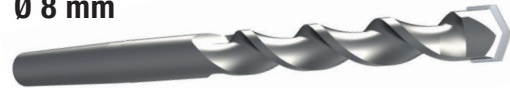
CORE BIT - Ref.300
1/8 conical - Ø 40 to 150 mm



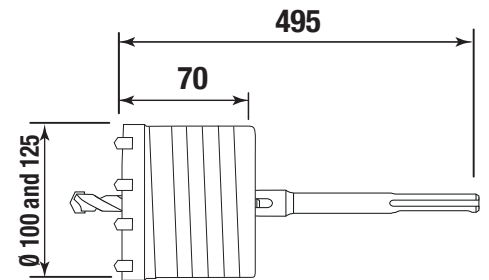
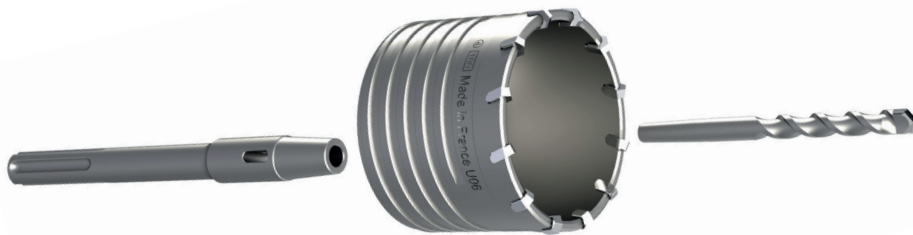
BIT HOLDER - Ref.330
1/8 conical - Lg 220 à 900 mm



CENTERING DRILL BIT - Ref.302
Ø 8 mm

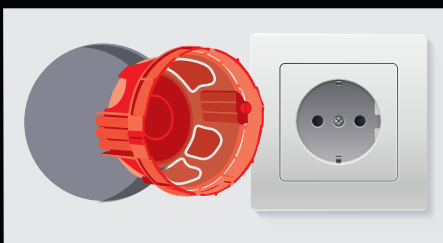


KIT CORE BIT KIT - Ref.300C
Compatible sds-max - Ø 100 and 125 mm



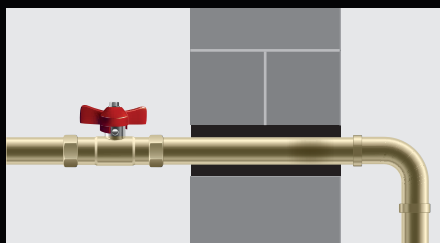
APPLICATIONS

ELECTRICAL BOXES



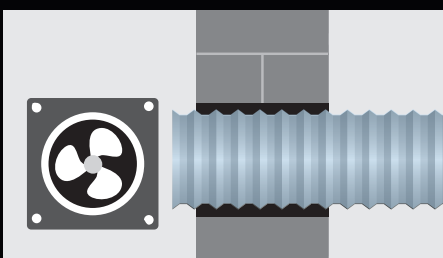
Standard stipulates that all flush-mounted electrical circuits must use flush-mounted boxes to comply with the following requirements.

PASSAGE FOR PIPES



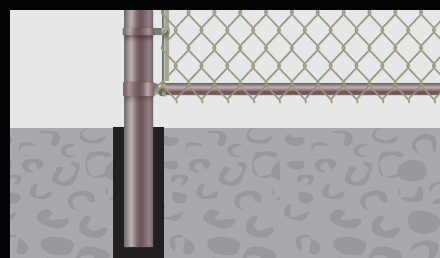
Ideal for making holes for passage of pipes (e.g. sink drains, showers and WCs evacuation),

VENTILATION PIPES



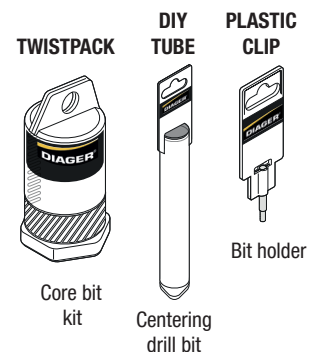
Diameter suitable for making holes for the passage of CMV ducts or various for ventilation

SEALING POST



Sealing various posts or street furniture in concrete.

PACKAGING

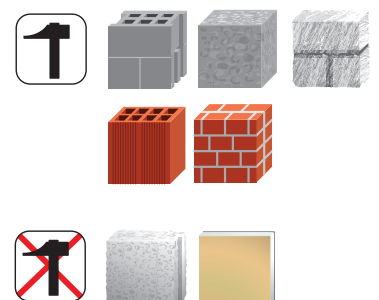


Core bit kit

Centering drill bit

Bit holder

MATERIALS



Breeze block, concrete, natural stone, brick, cellular concrete, plaster.