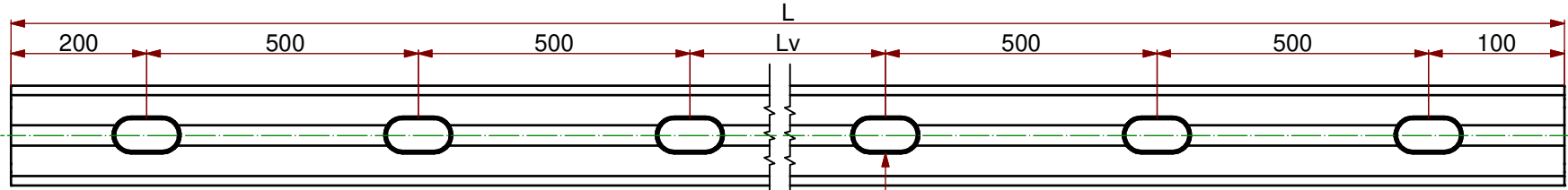


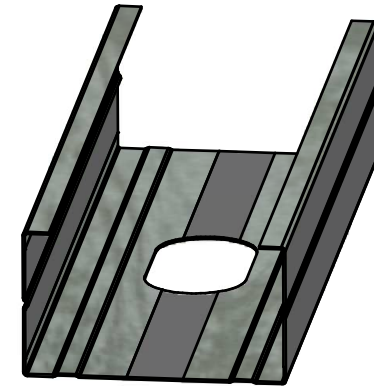
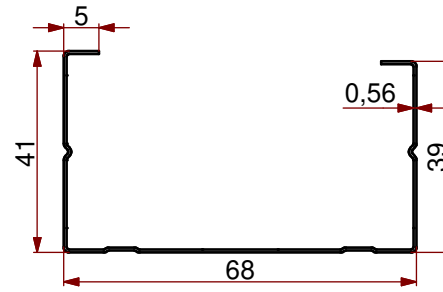
SCHEDA TECNICA / FICHES TECHNIQUES / TECHNISCHE DATENBLATT / TECHNICAL SPECIFICATIONS / FICHA TÉCNICA / FICHA TECNICA



DIMENSIONE FORI 50 mm x 27 mm (imbutiti) - DIMENSION DE TROUS 50 mm x 27 mm (embouti)
 MAß DER STANZUNGEN 50 mm x 27 mm (gebördelt) - DIMENSION (SIZE) HOLES 50 mm x 27 mm (deep drawn)

NUMERO FORI BARRA / NUMERO DE TROUS POUR PROFIL / ANZAHL DER LÖCHER PRO STANGE / NUMBER OF HOLES ON C-STUD

Articolo / Article / Artikel / Article	N. Fori / N. Trous / N. Löcher / N. Holes
da / de / von / from 1900mm a / a / bis / to 2399mm	4
da / de / von / from 2400mm a / a / bis / to 2899mm	5
oltre / de / ab / over 2900mm	6



IMPIEGO EMPLOI ANWENDUNG USE	Orditura per pareti e contropareti Ossature pour cloisons et contre-cloisons Aufbau für Wände und Gegenwände Frame for walls and false walls
NORMA DI RIFERIMENTO NORME DE REFERENCE NORM STANDARD REGULATION	NF EN14195 E NF DTU 25.41 Fév. 2008 NF EN14195 ET NF DTU 25.41 Fév. 2008 NF EN14195 UND NF DTU 25.41 Fév. 2008 NF EN14195 AND NF DTU 25.41 Fév. 2008
MATERIALE MATERIEL MATERIALART MATERIAL	Acciaio zincato tipo DX51D +Z140 o AZ100 secondo UNI EN 10327, UNI EN 10143 Acier galvanisé type DX51D +Z140 ou AZ100 selon UNI EN 10327, UNI EN 10143 Verzinktes Stahlblech der Sorte DX51D +Z140 oder AZ100 nach DIN EN 10327, UNI EN 10143 Galvanized steel DX51D +Z140 or AZ100 type according to UNI EN 10327, UNI EN 10143
RESISTENZA A FLESSIONE RESISTENCE A LA FLEXION BIEGESTEIFIGKEIT BENDING STRENGTH	Carico di snervamento >280N/mm ² Charge d'enervement > 280 N/mm ² Fließgrenze > 280 N/mm ² Yield point > 280 N/mm ²
RESISTENZA AL FUOCO RESISTENCE AU FEU FEUERSCHUTZKLASSE FIRE RESISTANCE	Euroclasse A1 Euroclasse A1 Euroclasse A1 Euroclass A1
LUNGHEZZA - L LONGUEUR - L LÄNGE - L LENGTH - L	3000 mm, 4000 mm standard (altre misure su richiesta) 3000 mm und 4000 mm standard (autres mesures sur demande) 3000 mm und 4000 mm standard (andere Länge auf Anfrage) 3000 mm und 4000 mm standard (other lengths available on demand)
PESO POIDS GEWICHT WEIGHT	0,663 kg/m 0,663 kg/m 0,663 kg/m 0,663 kg/m

INERZIA
 $I_y = 7,4 \text{ cm}^4$

CIPRIANI - PROFILATI

CIPRIANI PROFILATI s.r.l. - Via Pineta,31 - 38068 Rovereto (TN) Italy
 P.Iva 01173470228 - Tel. +39 0464 421412 - Fax. +39 0464 431330
 E-mail: info@ciprianiprofilati.it - Web: www.ciprianiprofilati.it

Disegnato/ Dessiné/ Gezeichnet/ Drawn/ Diseñado/ Desenhado:	Controlato/ Contrôlé/ Kontrolliert/ Checked/ Revisado/ Controlado:	Approvato/ Approuvé/ Genehmigt/ Approved/ Aprobado/ Aprovado:
G.Carbonari	P.Vivaldelli	G.Cipriani

Disegno/ Dessin/ Zeichnung/
Drawing/ Desenho/ Desenho:

FC704056

Scala/ Echelle/ Abschluss/ Scale/ Escala/ Escala:		QUALITY SYSTEM CERTIFIED
1:1 1:2 1:5	mm	UNI EN ISO 9001 SGS n. IT 07/1415

Data/ Date/ Datum/
Date/ Fecha/ Data: 02/11/2012

Unità di misura/ Unité de mesure/
Unidad de medida/ Unidade de medida:

Cipriani Profiliati s.r.l. - Con diritto sul presente disegno e sui contenuti del presente disegno e sui contenuti del presente disegno. Toute réimpression, utilisation, copie, reproduction, publication et distribution, en tout ou en partie, sans l'autorisation écrite de la direction générale des relations publiques de l'entreprise, sont formellement interdites. The reproduction, publication and distribution of this drawing by any means or in any form, without the written consent of the company, is strictly prohibited. The reproduction, publication and distribution of this drawing by any means or in any form, without the written consent of the company, is strictly prohibited. A sua reprodução, publicação e distribuição, total ou parcial sem autorização expressa da empresa, são proibidas.